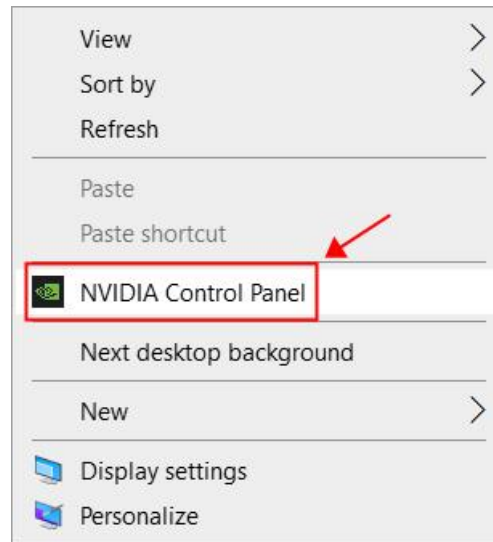


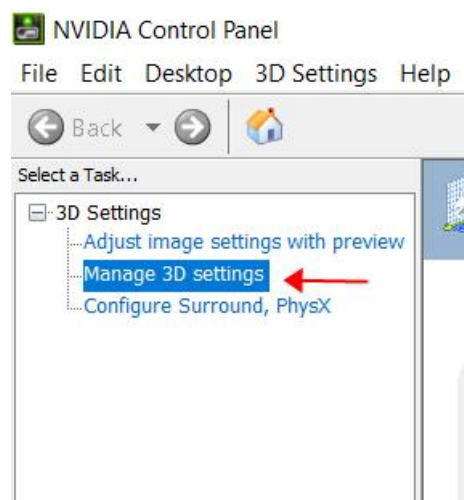
How to set the default GPU of NVIDIA

(Under Win10)

<Step1> Right click the desktop and left click the **NVIDIA control panel**



<Step2> In the opened interface, click **Manage 3D settings**



<Step3> In the extension interface on the right, click **Global settings**. Below is a GPU that can be used in preference. Click the drop-down arrow to see the recognizable GPU in the computer.

